



MONSIEUR TRICOT

User manual English

Version 2.0 issued o 07-01-2021

TRIBÙ
The art of leisure

MONSIEUR TRICOT

Introduction	6
The story of Monsieur Tricot	6
Collection overview	7
Safety instructions	8
Intended use	8
Disclaimer	9
Recycling	9
Compliance	10

HANGING

Product overview	12
Parts list	12
Specifications	13
Installation	14
Checking the contents of the package	14
Installing the lamp	14
Maintenance	18
Replacing the LED light bulb	18
Cleaning the removable cover	20

STANDING

Product overview	24
Parts list	24
Specifications	25
Installation	26
Checking the contents of the package	26
Charging the LED light	26
Operating the lamp with the button	27
Installing app	28
Connecting with the lamp(s)	28
Use	31
Controlling the lamp	31
Creating a group	36
Programming	39
Sharing	40
Maintenance	42
Cleaning the removable cover	42
Troubleshooting	46

INTRODUCTION

Congratulations on the purchase of your Monsieur Tricot lamp. Its warm glow and hand-crocheted or knitted fabric will cast beautiful shadows as a magical backdrop for long, cosy summer nights. The Monsieur Tricot hanging and standing lamps form a complete family of lights – you can read their story below.

This user manual contains all the necessary information for the correct, efficient and safe use of your lamp. We encourage you to read this information carefully before installing or using the product.

One lamp from the Monsieur Tricot collection has been used as an example to explain the instructions. It may be possible that your lamp looks slightly different.

THE STORY OF MONSIEUR TRICOT

Designer Ilia Eckardt grew up immersed in the Belgian fashion scene, his mother Hilde Frunt knitting prototypes for Belgian fashion designers such as Raf Simons, Ann Demeulemeester and Dries Van Noten. Fascinated by their world, Ilia worked on several knitting projects of his own, experimenting with innovative knitting techniques and materials.

Monsieur Tricot is his first creation, a family of in- and outdoor lamps, knitted or hand-crocheted with an innovative, weatherproof yarn. The sphere shaped lights give a warm glow and the different patterns cast beautiful shadows. The knitting and crocheting is done in Belgium by a network of artisans and every item is checked by Ilia and his mother.

As family is very important to the designer, he created his light objects as a family. Meet the handsome Monsieur Lebonnet, the graceful Madame Latoque, the chic Madame Cachet and their nephew Monsieur Ellipse.

COLLECTION OVERVIEW

STANDING	Monsieur Lebonnet			Madame Latoque	
					
	dia 30cm D080130S	dia 40cm D080140S	dia 60cm D080160S	dia 30cm D080230S	dia 40cm D080240S
	Madame Cachet				
					
	dia 30cm D080330S	dia 40cm D080340S	dia 50cm D080350S		
HANGING	Monsieur Lebonnet			Madame Latoque	
					
	dia 30cm D080130H	dia 40cm D080140H	dia 60cm D080160H	dia 30cm D080230H	dia 40cm D080240H
	Madame Cachet			Monsieur Ellipse	
					
	dia 30cm D080330H	dia 40cm D080340H	dia 50cm D080350H	dia 40cm D080440H	
COLORS					
					
	00-White	10-Linen	89-Wengé		
					
	60-Brick	30-Moss			

SAFETY INSTRUCTIONS

- ⚠ Only use the product as described in this manual.
- ⚠ Do not use a damaged product.
- ⚠ Do not drop the product and avoid bumping.
- ⚠ Do not use the product if a part is damaged or defective.
Replace a damaged or defective part immediately.
- ⚠ Always switch off the power before starting installation or maintenance work.
- ⚠ Do not tumble dry the removable cover.
- ⚠ Installation of the hanging lamps must be done by a qualified electrician.
- ⚠ Any changes made to the product can have consequences for safety, correct operation and warranty procedures.

INTENDED USE

The product is only intended as indoor or outdoor LED lighting. Any change to the product can have consequences for safety, warranty and correct operation.

DISCLAIMER

Designs and specifications are subject to change without notice. All logos, brands and product names are trademarks or registered trademarks of their respective owners and are hereby recognised as such.

RECYCLING

Our products are packaged in environmentally friendly materials that can be recycled, disposed of or destroyed without endangering the environment.



This symbol indicates that a product should not be thrown away with other household waste throughout the EU to prevent possible harm to the environment or human health by uncontrolled waste disposal. You are responsible for recycling in order to promote the sustainable reuse of raw materials.

COMPLIANCE



Monsieur Tricot complies with Low Voltage, EMC, Ecodesign and RoHS directives.

FCC WARNING

This device complies with part 15 of the FCC Rules. Operation is subject to the following two conditions: (1) this device must not cause harmful interference, and (2) the user must accept any interference received, including interference that may cause undesired operation. Any changes or modifications not expressly approved by the party responsible for compliance could void the user's authority to operate the equipment.

NOTE: This equipment has been tested and found to comply with the limits for a Class B digital device, pursuant to Part 15 of the FCC Rules. These limits are designed to provide reasonable protection against harmful interference in a residential installation. This equipment generates, uses and can radiate radio frequency energy and, if not installed and used in accordance with the instructions, may cause harmful interference to radio communications. However, there is no guarantee that interference will not occur in a particular installation.

If this equipment does cause interference to radio or television reception, which can be determined by turning the equipment off and on, the user is encouraged to try to correct the interference by one or more of the following measures:

- Reorient or relocate the receiving antenna.
- Increase the separation between the equipment and receiver.
- Connect the equipment to an outlet on a different circuit from the receiver.
- Consult the dealer or an experienced radio/TV technician for help.

To maintain compliance with the FCC's RF Exposure guidelines, This equipment should be installed and operated with minimum distance of 20cm between the source of interference (in this case Bluetooth) and your body.

IC Caution:

This device complies with Industry Canada's licence-exempt RSSs. Operation is subject to the following two conditions:

- (1) This device must not cause interference; and
- (2) This user must accept any interference, including interference that may cause undesired operation of the device.

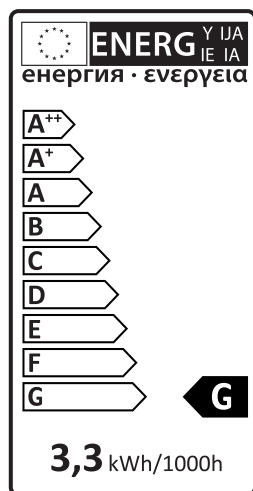
To maintain compliance with RF exposure guidelines, this equipment should be installed and operated with a minimum distance of 20cm between the lamp and your body.

Le présent appareil est conforme aux CNR d'Industrie Canada applicables aux appareils radio exempts de licence. L'exploitation est autorisée aux deux conditions suivantes:

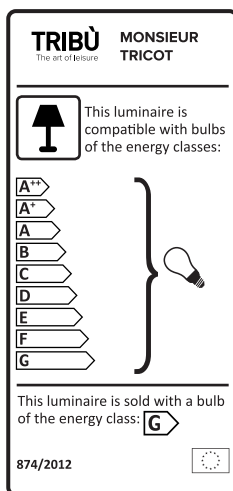
- (1) l'appareil ne doit pas produire de brouillage, et
- (2) l'utilisateur de l'appareil doit accepter tout brouillage radioélectrique subi, même si le brouillage est susceptible d'en compromettre le fonctionnement.

Pour maintenir la conformité aux directives d'exposition aux radiofréquences, cet équipement doit être installé et utilisé avec une distance minimale de 20 cm entre le radiateur et votre corps.

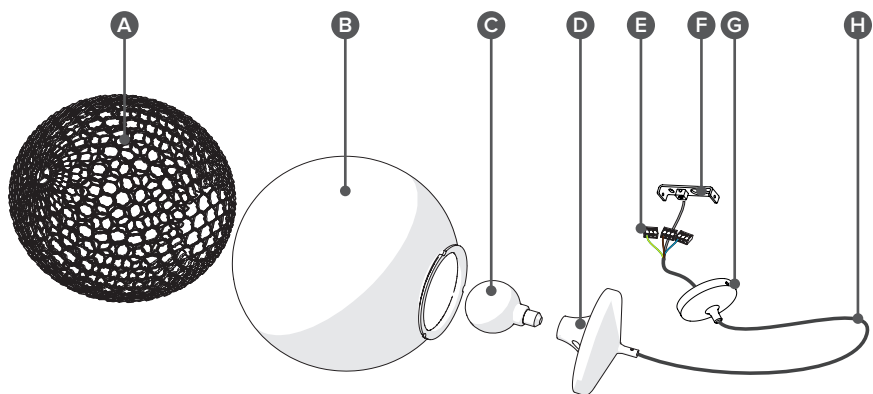
Monsieur Tricot Standing



Monsieur Tricot Hanging



PRODUCT OVERVIEW HANGING



PARTS LIST

- | | | | |
|----------|-----------------|----------|-----------------------|
| A | Removable cover | E | Splicing connector |
| B | Sphere | F | Mounting bracket |
| C | LED light | G | Ceiling canopy |
| D | Fitting | H | 4-wire cable, 5 meter |

SPECIFICATIONS

Light source	Dimmable LED filament bulb included
Colour temperature	2,200 K
Socket	E27/E26
Voltage	220-240V
Wattage	2.5W
Average lifetime	30,000 hrs
Cycles on/off	10,000
Lumen flux	240 Lumen
Colour rendering index	Ra. 80
Energy class	F
Battery	No
Installing	5 meter cable, mounting bracket, ceiling canopy and wire connector clamps included
Control	Have a local professional install a switch
Dimmable	Yes

INSTALLING THE LAMP

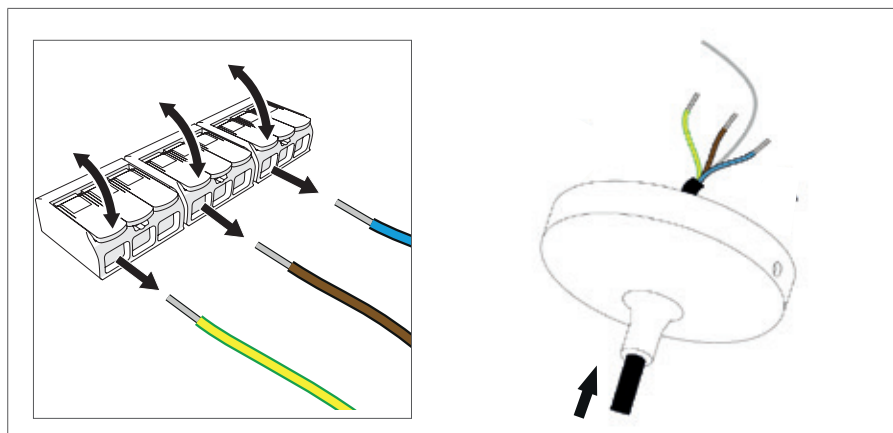
CHECKING THE CONTENTS OF THE PACKAGE

Check if all parts from the parts list are present and that no damage is visible on the parts. If parts are missing or damaged, please contact your local Tribù dealer.

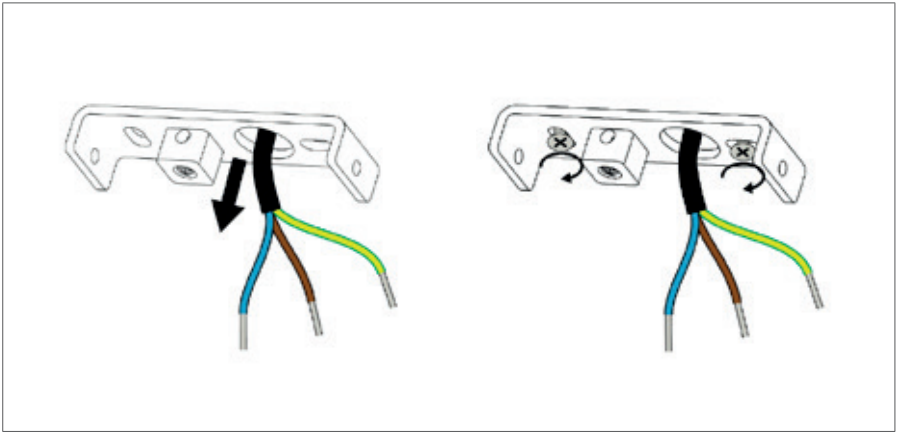
INSTALLING THE LAMP

- ⚠ Always switch off the power before starting installation or maintenance work.
- ⚠ Installation must be done by a qualified electrician
- ⚠ Install the lamp requires two people.

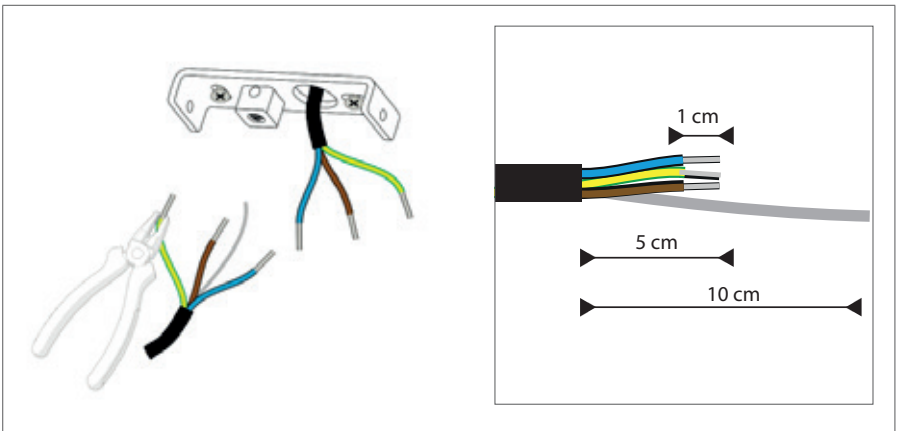
To hang the lamp at the desired height:



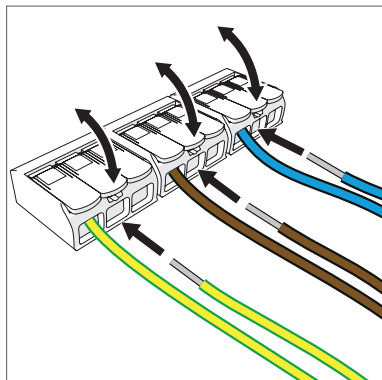
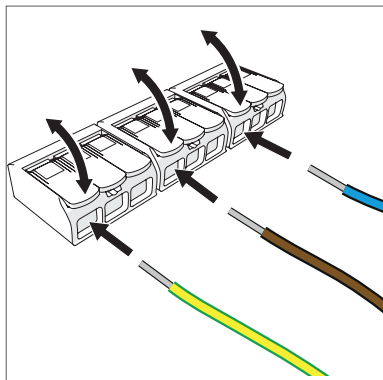
1. Remove the wires from the splicing connectors.
2. Route the cable through the canopy.



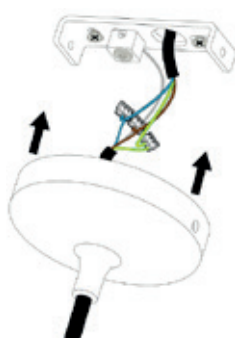
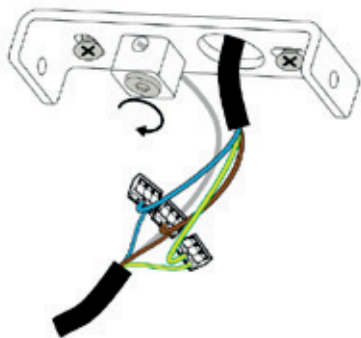
3. Guide the cables coming from the ceiling trough the designated hole in the mounting bracket.
4. Secure the mounting bracket to the ceiling with 2 screws.



5. Cut the exposed cable to the desired length - minimum 10cm.
6. Remove 10 cm of the black cover.
7. Shorten the electric wires to 5 cm and strip 1 cm.
- ⚠ Do not shorten the metal wire.



8. Insert the cables from the lamp into the splicing connectors.
9. Connect the wires coming from the ceiling and the cables from the lamp with the splicing connectors.



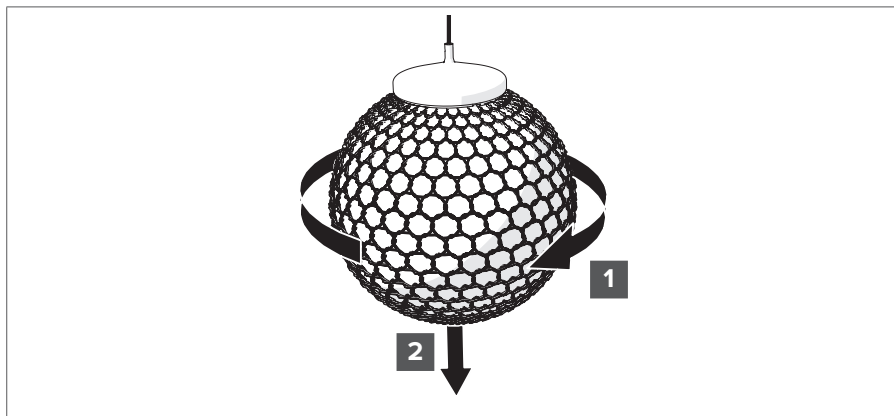
10. Secure the steel cable by inserting it in the designated hole. Secure it by tightening the screw.
11. Slide the canopy over the mounting bracket.



12. Secure the canopy by tightening the 2 bolts.

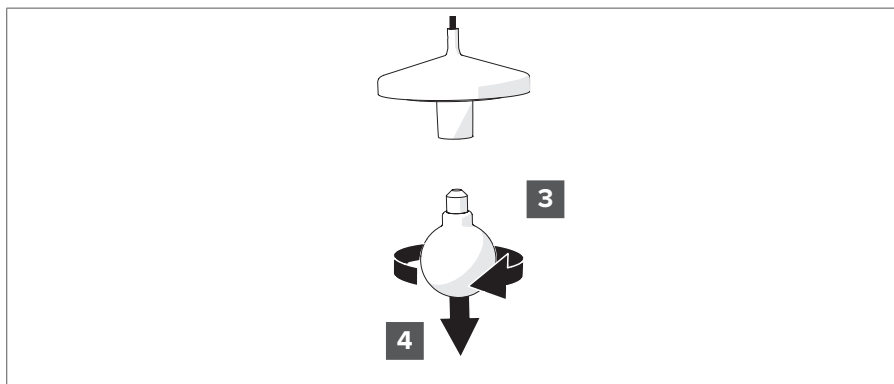
MAINTENANCE

REPLACING THE LED LIGHT BULB

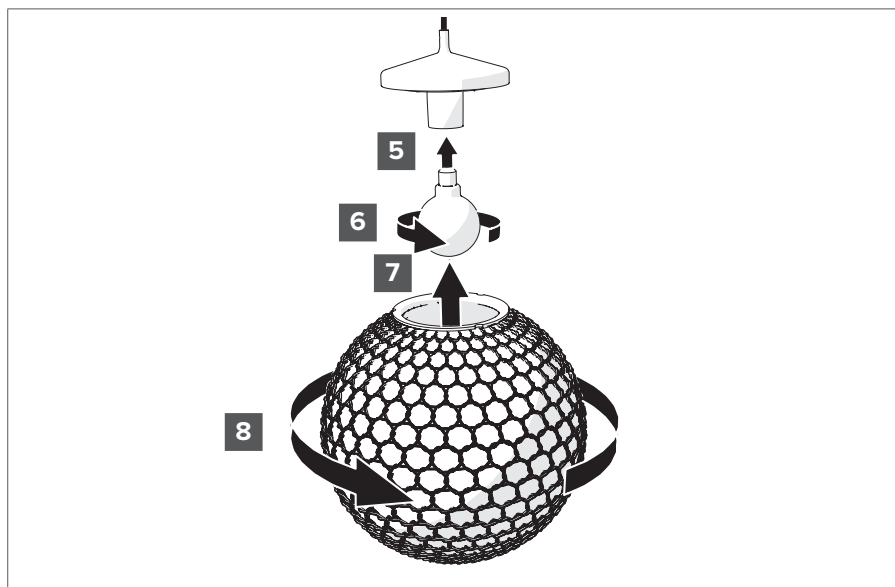


⚠ Always switch off the power before starting installation or maintenance work.

1. Turn the sphere clockwise until it is free of the bayonet catch.
2. Remove the sphere.

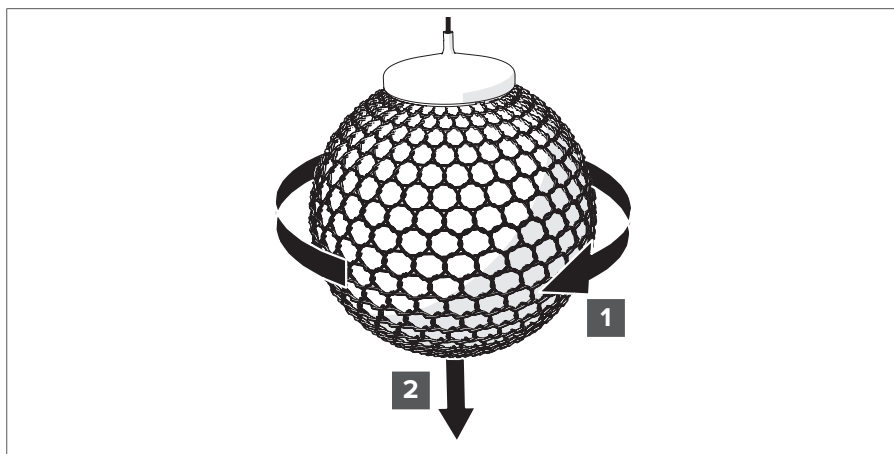


3. Turn the LED light clockwise.
4. Remove the LED light.



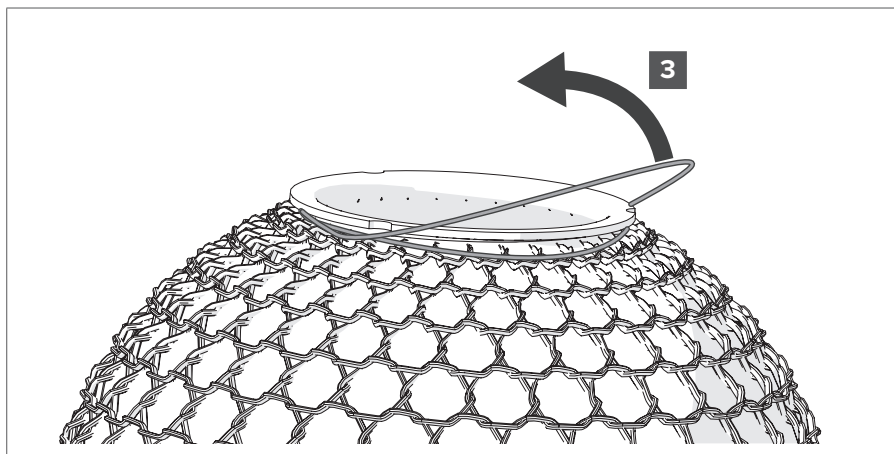
5. Place the new LED light in the socket.
6. Turn the LED light counterclockwise.
7. Place the sphere in the bayonet catch.
8. Turn the sphere counterclockwise until it is fastened.
9. Switch on the power and test whether the lamp is functioning properly.

CLEANING THE COVER

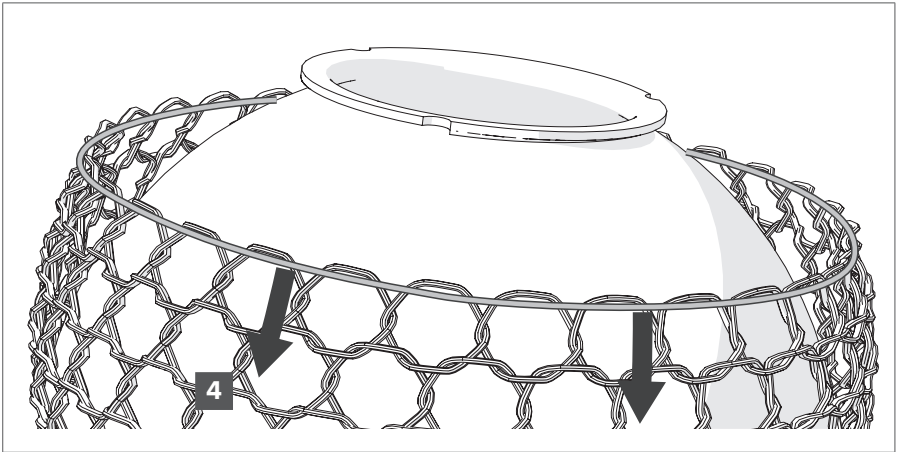


⚠ Always switch off the power before starting installation or maintenance work.

1. Turn the sphere clockwise until it is free of the bayonet catch.
2. Remove the sphere.



3. Loosen the elastic band of the removable cover.

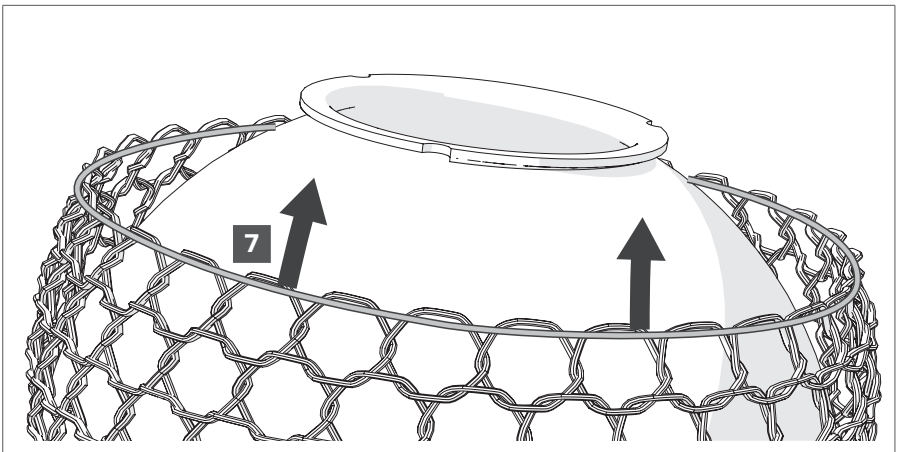


4. Pull the cover off the sphere.

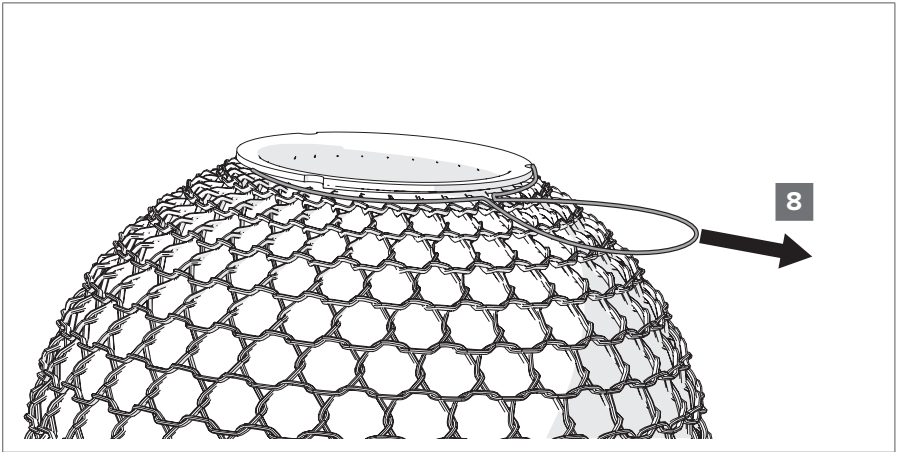
5. Wash at 40 degrees with a pH-neutral washing agent.

⚠ Do not tumble dry the cover.

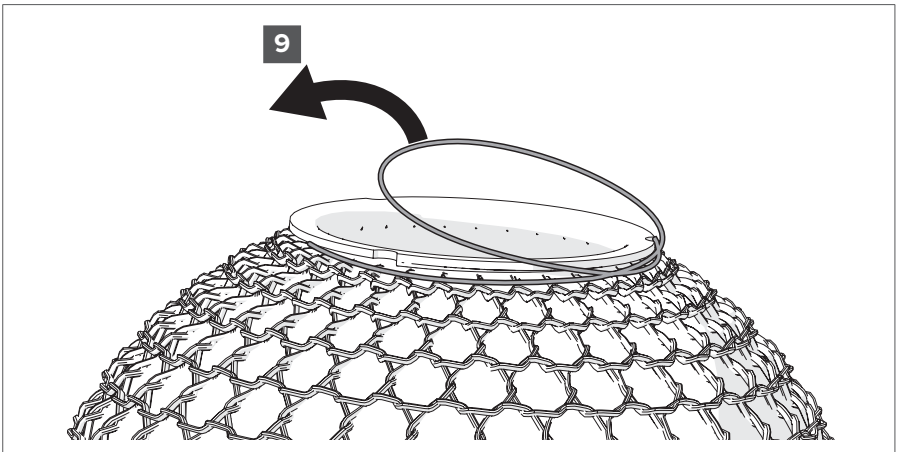
6. Use a clean, microfibre cloth, lukewarm/hot water and a pH-neutral washing agent to clean the sphere.



7. Pull the cover back over the sphere.



8. Tighten the elastic band to form a loop.

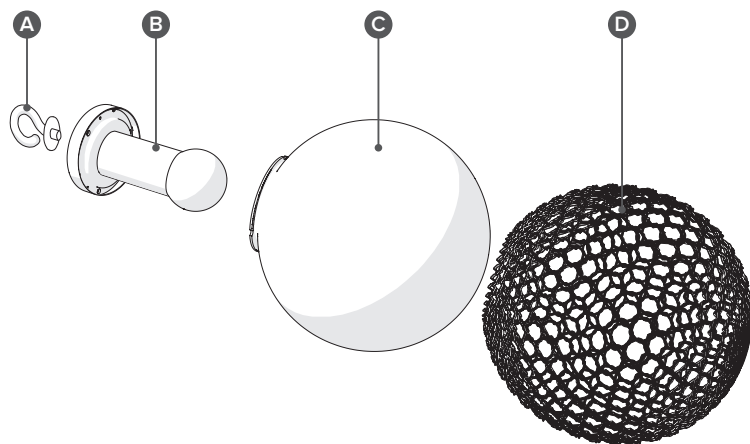


9. Twist and pull the loop over the rim of the sphere.



10. Place the sphere in the bayonet catch.
11. Turn the sphere counterclockwise until it is fastened.
12. Switch on the power and test whether the lamp is functioning properly.

PRODUCT OVERVIEW STANDING



PARTS LIST

- A** Hook
- B** Base
- C** Sphere
- D** Removable cover

SPECIFICATIONS

Power	2.5W
Light source	Dimmable LED included
Voltage	9-12.6V
Wattage	2.5W-3W
Average lifetime	30,000 hrs
Cycles on/off	≥ 10,000
Starting time	Within 1 sec
Warm-up time to 60% of the full light output	Immediate full light output
Light source dimensions	178 x 85 mm
Luminous flux	190 Lumen
Luminous efficacy	80 Lumen/Watt
Lumen maintenance	95% 3600H
Colour rendering index	Ra.80
Energy class	G
Battery	Rechargeable battery, up to 12 hrs operational at 100%
Charging	Power adaptor and cable included, 5 hrs of charging time
Control	Via Bluetooth connection
Dimming	Can be dimmed via Bluetooth connection

ADAPTER SPECIFICATIONS

Supply voltage	230V : 5V/A 9V/2A
Power	18W

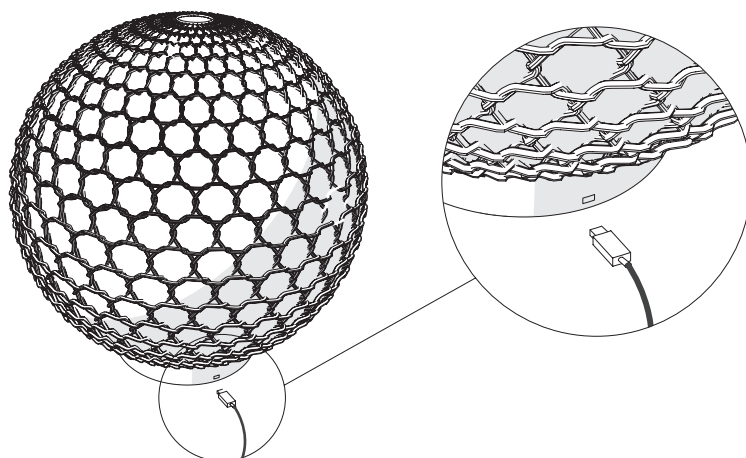
INSTALLATION

CHECK THE CONTENTS OF THE PACKAGE

Check if all parts from the parts list are present and that no damage is visible on the parts. If parts are missing or damaged, please contact your local Tribù dealer.

CHARGING THE LED LIGHT

1. Install a plug type on the adapter that matches your wall socket.



1. Connect the adapter to a wall socket and the lamp.
- ⚠ The lamp has a USB C port. Do not connect any other USB types, this will damage the lamp.
2. Charge the battery for at least 5 hours.
- ⚠ The battery is fully charged when the red LED light next to the LED filaments is off.

OPERATING THE LAMP WITH THE BUTTON

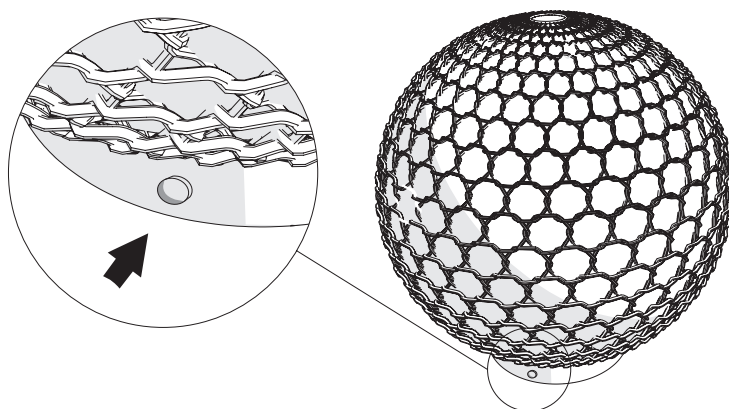
1. Every standing Monsieur Tricot has a physical button on it's base.
2. When pressing the button you can toggle between different levels of brightness.

33 % brightness

66 % brightness

100 % brightness

0 % brightness (OFF)



INSTALLING THE TRIBÙ MONSIEUR TRICOT APP

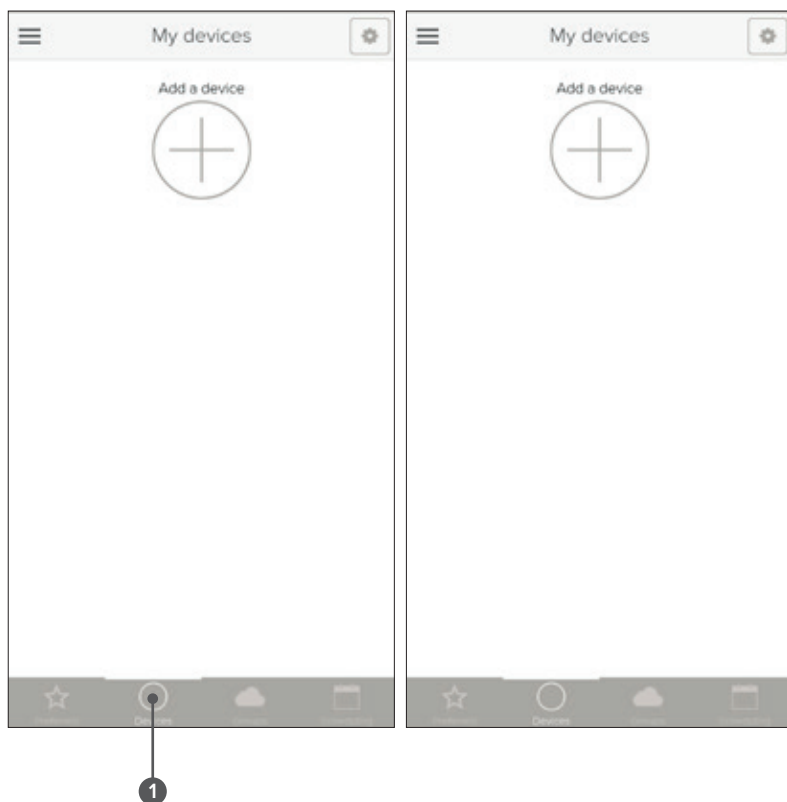
1. Download the Tribù Monsieur Tricot app for Android or iOS on your phone via Google Play or the Apple App Store.



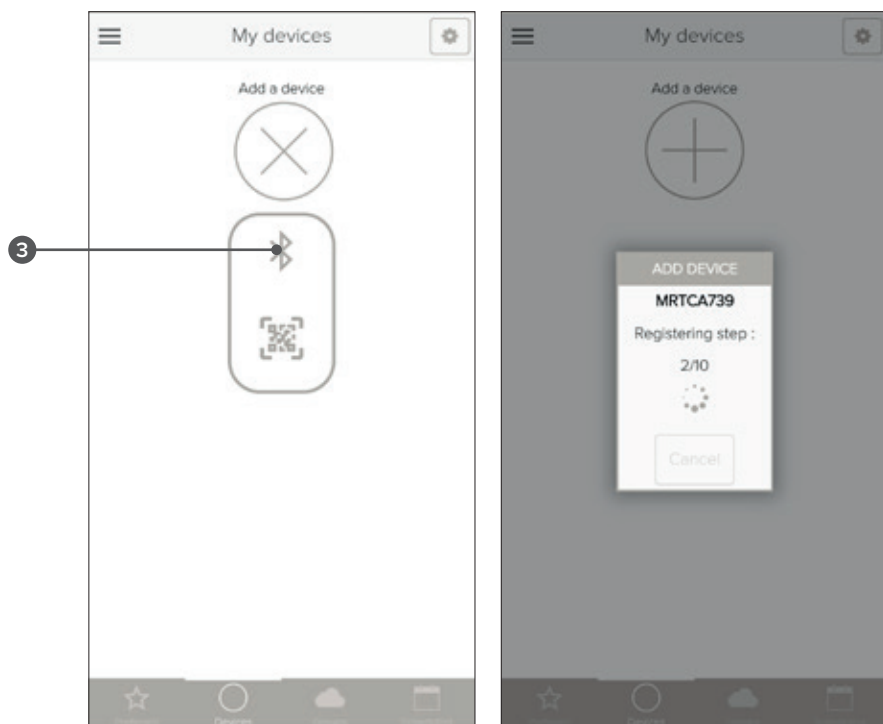
2. Switch on the lamp(s) by connecting the adapter.
3. Activate Bluetooth on your phone.

CONNECTING WITH THE LAMP(S)

1. Reset the lamp by holding the on/off button for 10 seconds.
- ⚠ The lamp will blink to confirm a succesfull reset.
2. Turn on the lamp by pushing the on/off button once.
3. Open the Tribù app on your phone.
4. Tap devices on the bottom of your screen.
5. Tap add a device.



6. Tap the Bluetooth icon.
- ⚠ The app will automatically connect to the nearest lamp.
- ⚠ If the connection is successful the lamp will blink.



7. Once connected, the lamp will show up in the My devices tab.



Repeat steps 1 – 3, if you want to connect more lamps.

USE

CONTROLLING THE LAMP

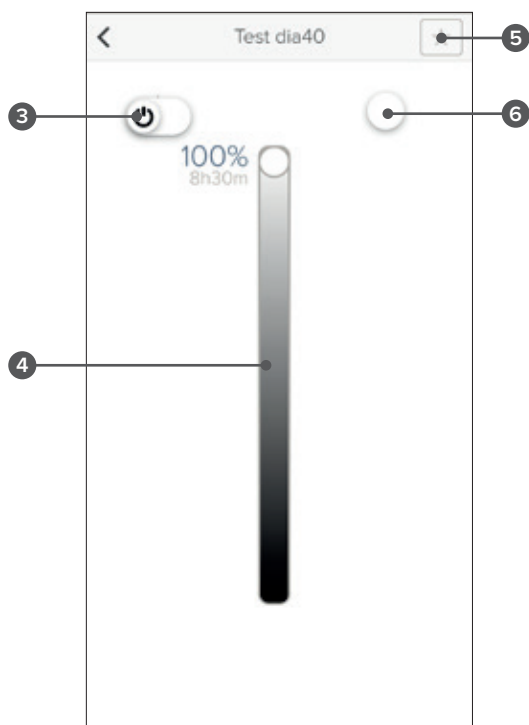
1. In the devices tab, tap the on/off button to activate or deactivate the lamp.



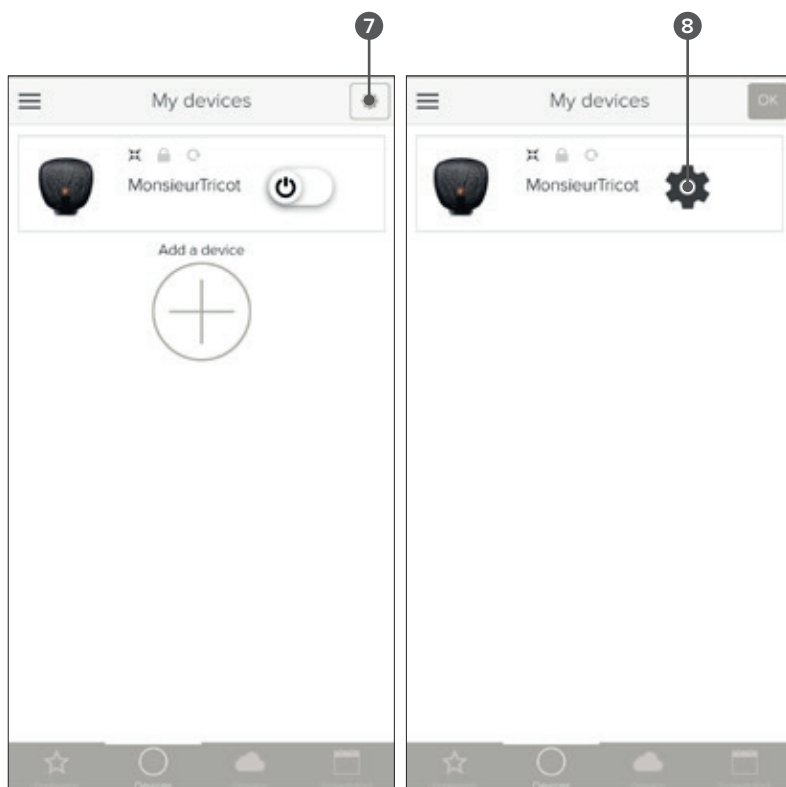
2. Tap the lamp to reveal more functions.



3. The on/off button activates or deactivates the lamp.
4. The slider controls the light intensity and displays the lifetime of the battery.
5. Tap the star to add this lamp to your preferred devices.
6. The dot displays the intensity of the light.

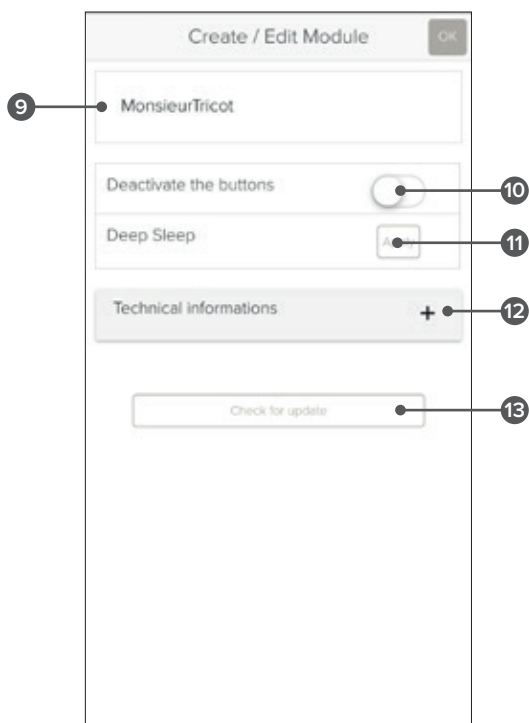


7. Return to the devices tab and tap the cog.
8. Another cog will appear next to the lamp- tap it to reveal the Create/Edit page.



On the Create/Edit page you have several options:

9. Change the name of your lamp.
10. Deactivate the button on the lamp. This can only be reactivated using the app.
11. Activate Deep Sleep mode. In this mode the lamp is turned off and the battery is preserved. It can only be activated with the physical on/off button.
12. Under Technical information you can find developer information.
13. Check for updates.



CREATE A GROUP

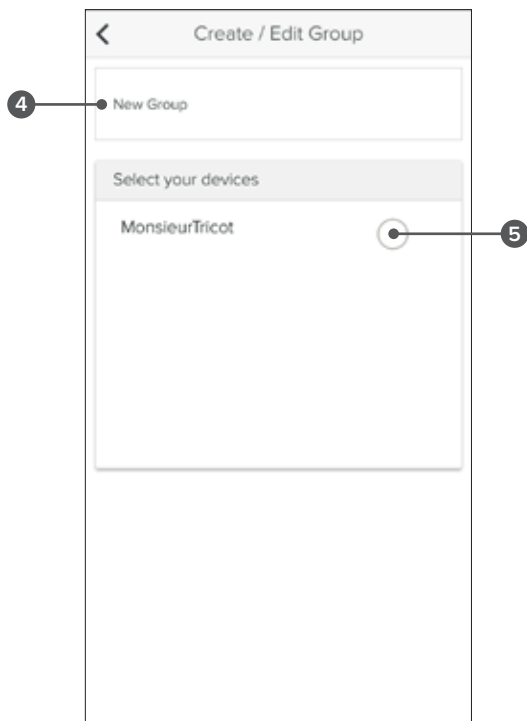
If you have several lamps, it is practical to link them together so that you can operate them as a group at the same time.

1. Go to the Groups tab.
2. The default group contains all of your lamps.
3. To create your own group, tap Create a Group.



Inside the Create/Edit group page you can:

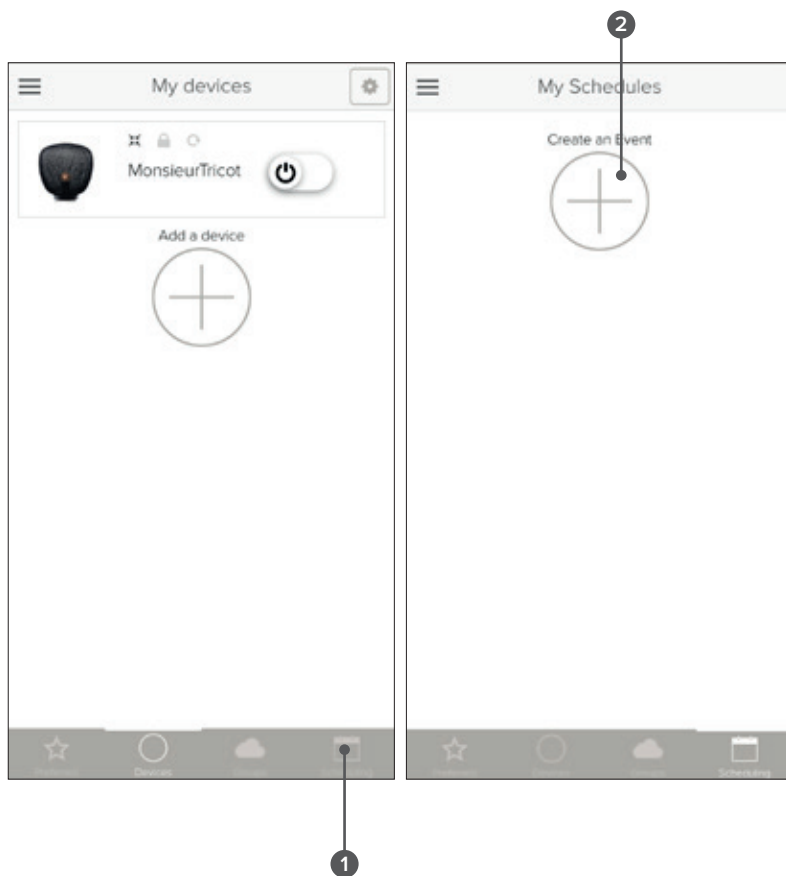
4. Change the name of the group.
5. Control which lamps are part of the group.



6. To remove a group, deselect all the lamps that are part of it.

PROGRAMMING

1. Go to the Scheduling tab.
2. Tap Create an Event.



On the Event page you can:

3. Change the name of the event.
4. Choose days of the week your event should be activated.
5. Choose a start and/or end time.
6. Match the start and end time with the sunset and sunrise.
7. Choose to repeat your event weekly.
8. Choose which lamps are added to this event.

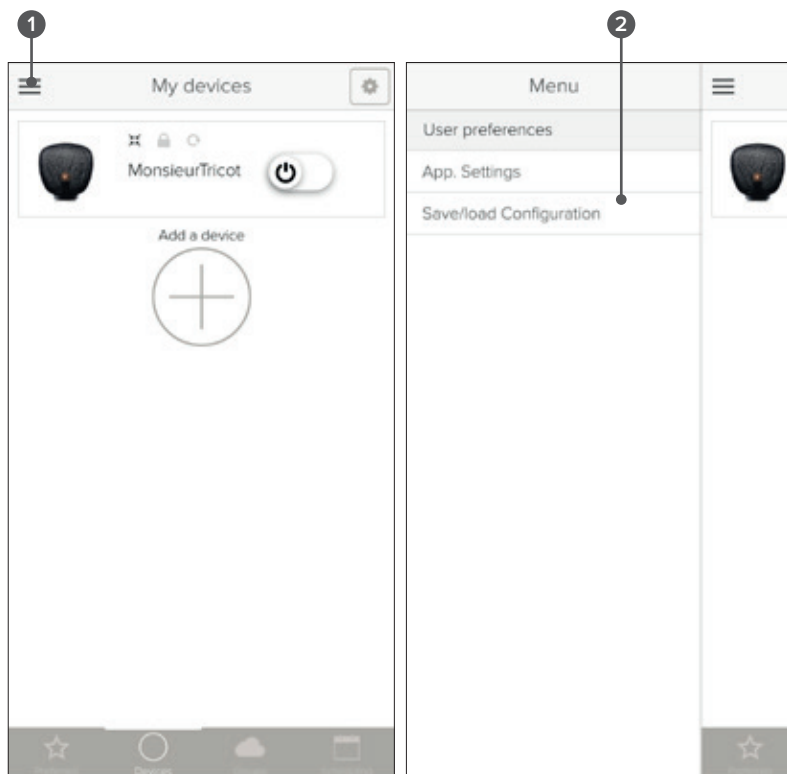
The screenshot shows the 'Create / Edit Event' screen in a mobile application. It features a back arrow and the title 'Create / Edit Event'. Below the title is a text input field labeled 'Evt 1' (callout 3). Underneath is a day selection row with buttons for M, Tu, W, Th (selected), F, Sa, and Su, along with a 'D+1' toggle (callout 4). Below the days are 'Start time' and 'End time' fields, both set to 12:00 and 13:00 respectively, with a 'Stop' button and a checkmark (callout 5). Below the time fields is a 'Sun Set / Rise' button with a double-headed arrow icon (callout 6). Further down is a 'Weekly' toggle switch that is currently turned on (callout 7). At the bottom is a section titled 'Functionalities' with a minus sign icon, containing a 'Select your devices' header. Below this header is a list of devices, with 'MonsieurTricot' (indicated by a gear icon) being selected, as shown by a filled circle next to its name (callout 8).

9. To remove an event simply deselect all the devices in the event.

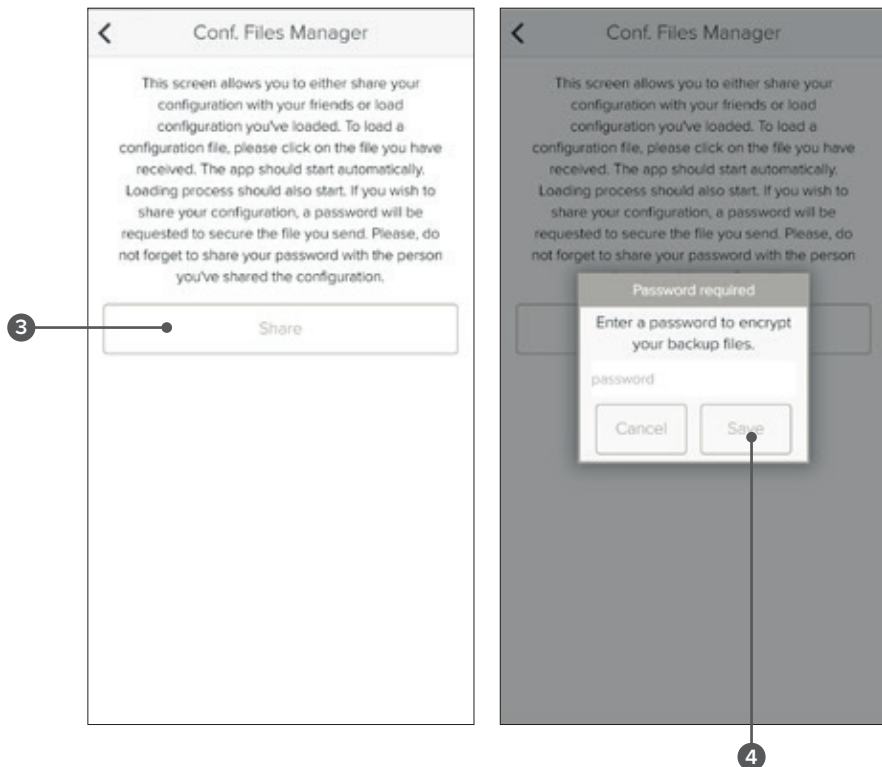
SHARING

⚠ It is possible to share your configuration with your friends/family or to load a configuration you have received.

1. Tap Menu in the upper left corner.
2. Then tap Save/load configuration.

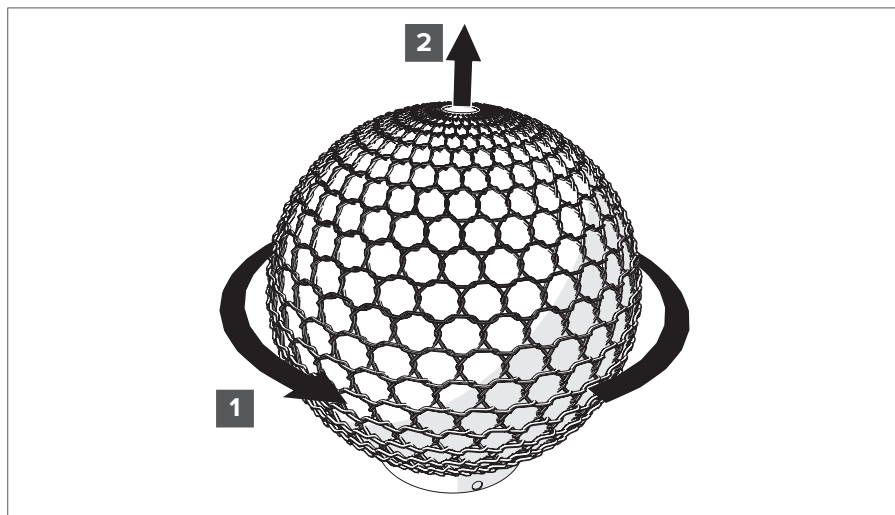


3. Tap Share.
 4. After you enter a password tap Save.
- ⚠ You will now get the option to share a file via email or WhatsApp. The recipient can simply tap open this file in the Tribù Monsieur Tricot app and access your configuration.
- ⚠ Do not forget to communicate the password you entered in step 4.

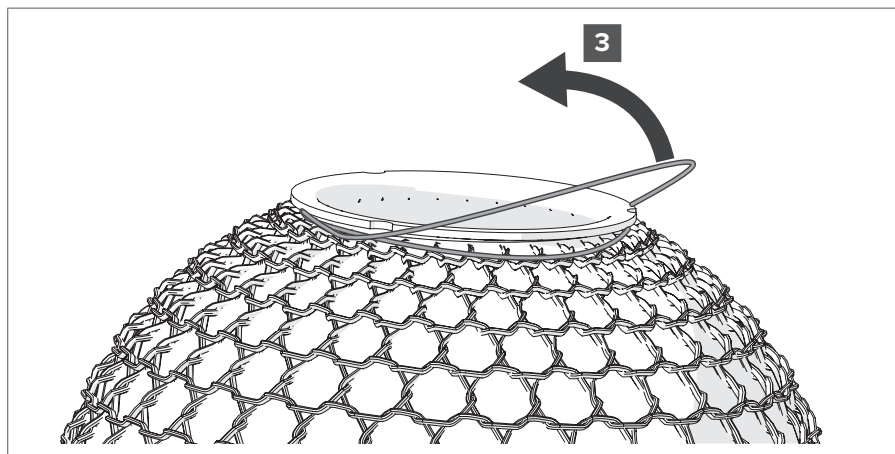


MAINTENANCE

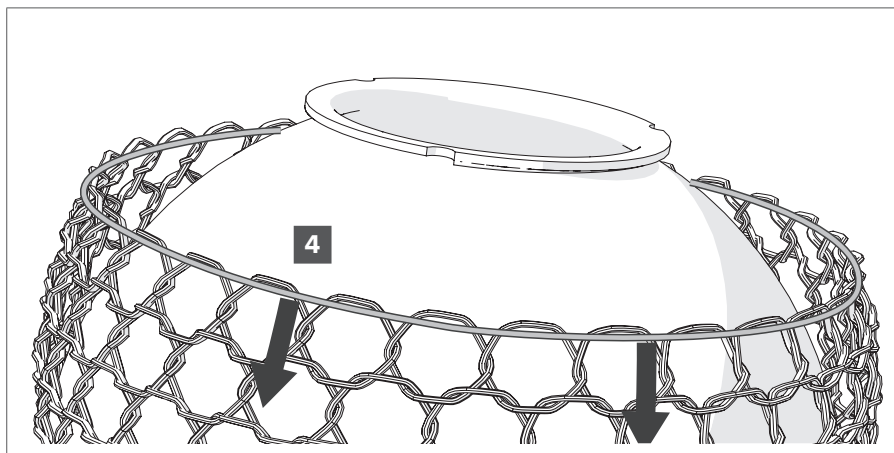
CLEANING THE COVER



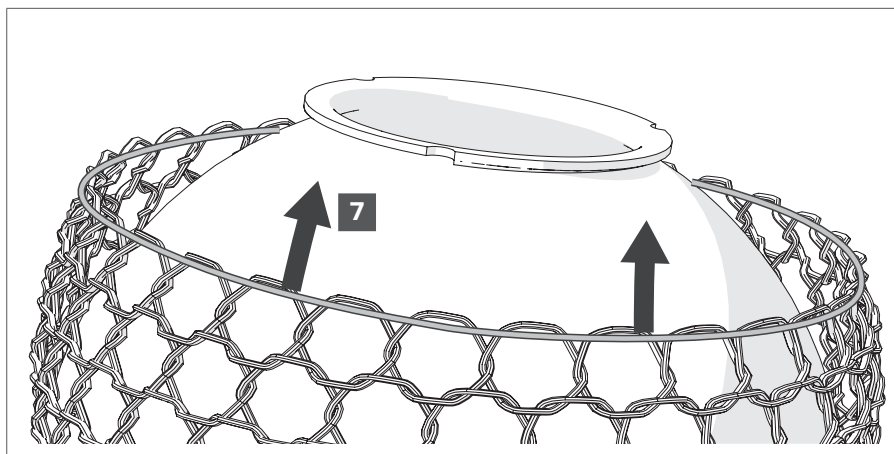
1. Turn the sphere counterclockwise until it is free of the base.
2. Remove the sphere.



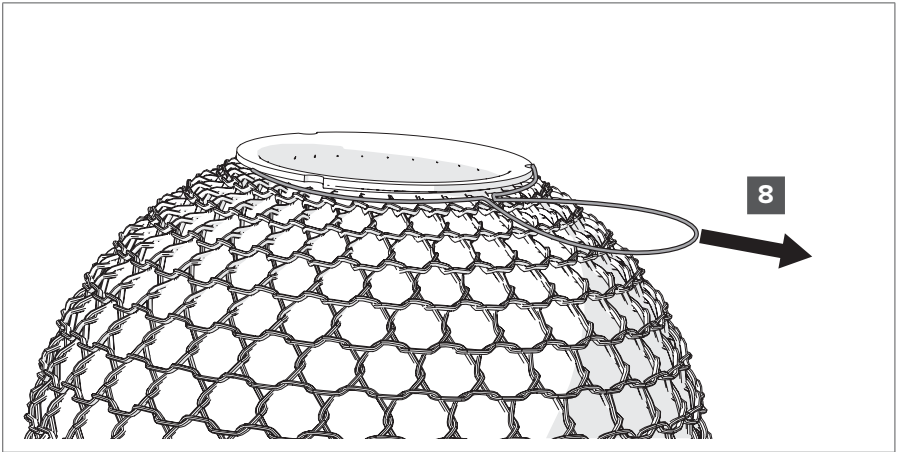
3. Loosen the elastic band of the removable cover.



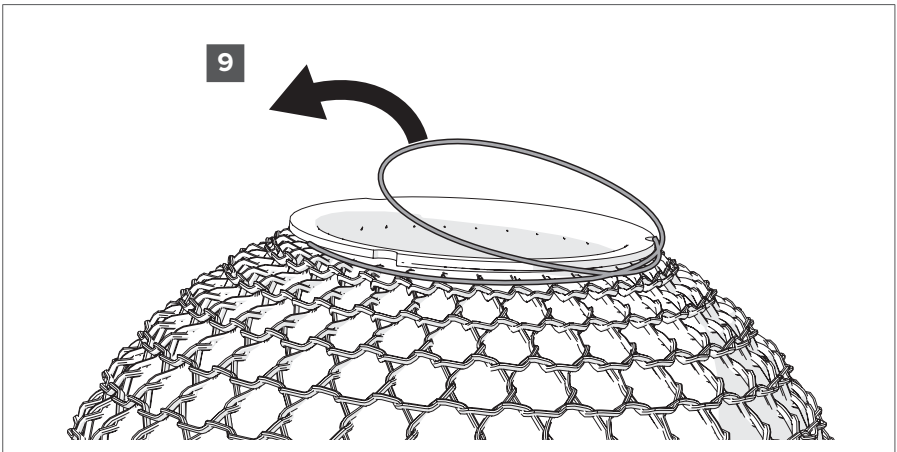
4. Pull the cover off the sphere.
5. Wash at 40 degrees with a pH-neutral washing agent.
- ⚠ Do not tumble dry the cover.
6. Use a clean, microfibre cloth, lukewarm/hot water and a pH-neutral washing agent to clean the sphere.



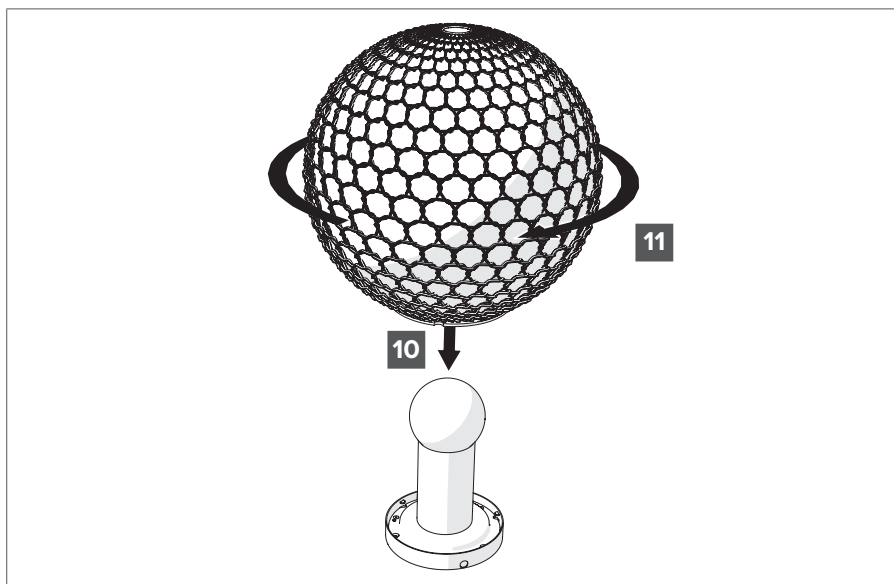
7. Pull the cover back over the sphere.



8. Tighten the elastic band to form a loop.



9. Twist and pull the loop over the rim of the sphere.



10. Place the sphere over the base.
11. Turn the sphere clockwise until it is secure.

TROUBLESHOOTING

1. You are unable to find the lamp in the app:
reset the lamp by holding the on/off button for 15 seconds.
The lamp will blink to confirm a successful reset.
2. The on/off button on the lamp does not work:
make sure the button is not deactivated in the app.



Produced by:

TRIBÙ
Oude Heidestraat 72
3740 Bilzen
Belgium

www.tribu.com